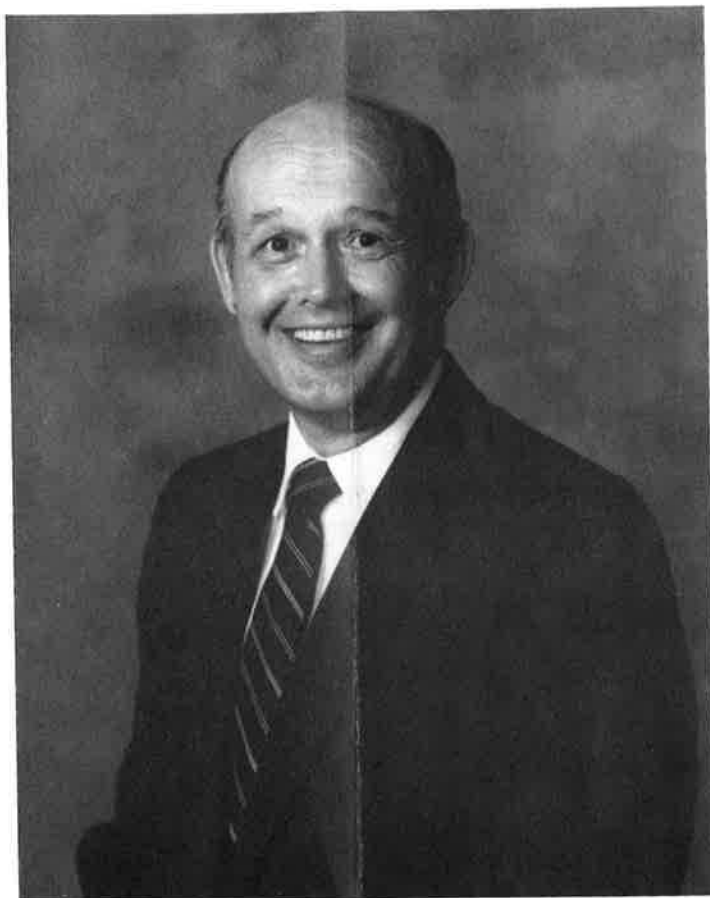


**The Pulpit Nominating Committee**

**presents**



**The Reverend Dr. Jerry M. Hilton**

in nomination to be called to the position of

**PASTOR AND HEAD OF STAFF**

of

**FIRST PRESBYTERIAN CHURCH**

Midland, Texas



Jerry Hilton, a life-long Presbyterian, was born in Springfield, Missouri, in 1939. He graduated from Missouri Valley College (a UPUSA college) in 1961, received his M.Div. from McCormick Theological Seminary in 1964 and a D.Min. from the University of Dubuque Theological Seminary in 1982.

Mary Sparks Hilton, born in 1938, in Bismark, North Dakota, moved with her family to Oklahoma City and received a degree in social work from the University of Oklahoma. After serving as youth director at the First Presbyterian Church in Winfield, Kansas, she attended McCormick Seminary, earning a Master's degree in Christian Education.

Mary and Jerry met at the seminary and were married in 1963. Mary remembers, "We like to say that our honeymoon trip was to Alaska in the summer

of 1963, accompanied by 25 high school students, where we held a work camp at a junior college in Sitka . . . truly an unforgettable experience."

The Hiltons have two daughters. Jo, 27, is in the graduate program at the Jane Addams School of Social Work at the University of Illinois and Carla, 25, works in Kansas City and is Assistant Youth Director at Pine Ridge Presbyterian Church. She plans to attend the Presbyterian School of Christian Education in Richmond.

Previous to accepting a call to First Presbyterian Church in Enid, Oklahoma in 1985, Jerry served as head of staff and pastored churches in Hobart, Oklahoma and in Aurora and Marshall, Missouri.

In Enid, Jerry supervises an employed staff of thirteen. Jerry describes the staff as "a team, a gathering of professional colleagues, and the church in miniature. We understand that as our Lord blesses persons in the church with a rich variety of gifts for the ministry, so that is true also of a church staff. Encouragement, affirmation and direct communication in a loving and caring context should form the basis for a healthy staff setting. It is no secret that members of a church staff tend to share with the laity it serves the same kind of Christian caring, encouragement and affirmation it finds within itself."

Concerning the role of pastor Jerry writes, "I believe that a pastor



is called by God to be a leader, to work with other church leaders in articulating clearly the vision and direction in which God is calling the church. It is as we open ourselves to the Lord and to one another with integrity and sensitivity that we learn what it means to be a family of faith. A pastor must know what he believes and where he stands theologically. Rather than being rigid, however, this means that he or she is by necessity a learner and pilgrim who is sensitive to the Spirit. In the company of fellow pilgrims, this has been my aim."

The Enid church has a mission program called Saturday Manna, which is a free luncheon for the hungry. Other activities offered are a Stephen's Ministry, a variety of Bible studies, a Wednesday night program, an annual all-church retreat and ministries with singles and youth. Once a year, the Elders and Deacons retreat together to pray, study and plan the direction of the church. Jerry has taught classes on parenting and a Sunday morning class of young adults.

Mary serves as Registrar at Phillips University. She is active in the church and is a member of the choir.

In the past, Jerry has been active in the work of the upper courts of the Presbyterian Church as time allowed and is presently serving on the Judicial Committee of the Synod of the Sun.

Jerry is also active in civic affairs having been on the Executive Committees of the Rotary Club and the Chamber of Commerce, on the Boards of Directors of St. Mary's Hospital and the American Heart Association and the Board of Trustees, Missouri Valley College. He is an adjunct professor at Phillips University and is a clinical member of the American Association of Marriage and Family Therapy.

The Hiltons enjoy camping with their daughters, reading, listening to music, attending cultural events and visiting with friends. They have travelled to the Holy Land, to England and Scotland and recently led a tour group through nine European countries.

The Pulpit Nominating Committee is enthusiastically unanimous in its recommendation and nomination of Dr. Jerry M. Hilton to be called to the position of Pastor/Head of Staff of First Presbyterian Church, Midland, Texas, effective January 1, 1993.

The committee has felt strongly God's guidance throughout the nominating process. The members feel that our and the congregation's prayers have been answered.

At this exciting time in the life of our church, let us remember, too, that we are all called to serve the Lord.

*"Now you are the body of Christ, and each one of you is a part of it."  
I Corinthians 12:27*



The Pulpit Nominating Committee  
Keith Bingham, Chair  
Sally Green, Vice Chair  
Becky Ferguson, Secretary

Craig Atchison  
Caroline Bryant  
Hyle Doss

Louan Rogers  
Robert Winkler  
Rick Yates